



Section 06 - Pedestal Cranes - Sales Item 06011110

New Build (Completed) – 7 Tonne PELLIGRINI Offshore Diesel Pedestal Crane Available with Manufacturers Warranty. Preserved by Manufacturer and Available for Immediate Delivery – Fully Documented.

DETAIL AS FOLLOWS:

Brief Description

A recently manufactured, unused fully load tested and RINA certified 7t SWL Diesel Engine Pedestal Crane suitable for offshore applications is offered for sale. The package consists a self contained Crane, with air conditioned cabin, diesel engine power for hydraulics and electrical supply, pedestal support cone, navigation lights and spares for 2 years of operation. Manufacturer's warranty valid until July 2011.

Crane Supplier

Crane Manufacturer: PELLIGRINI MARINE EQUIPMENTS, Verona, Italy
Crane Manufacturer Web Site: www.mepel.it
Year of Manufacture: July 2010, FAT and RINA Certificate Approved
Model No. CHCD 7/16 DH
Current Storage PELLIGRINI Facilities, Italy
As Built Doc Package Available from July 2010

Basic Crane Data

Design Code/Specs: API-2C + MEP Technical Specifications
Maximum Static Load: 7t at 2.64m (min radius) through to 16m (max radius)
Maximum Dynamic Load 7t at 2.64m (min radius) through to 16m (max radius)
Boom Length 17.4m
Max. Working Radius (Amax) 16m
Min. Working Radius (Amin) 2.64m
Specified Radius (Aspec) 11.5m



Height under Hook to LAT 41m (at Aspec radius)
Height under Hook to LAT 45.7m (at Amin radius)
Height under Hook to LAT 32.2m (at Amax radius)
Tail Swing 3.8m
Design Seastate 3m Sig wave height for Dynamic Supply Boat Lifts
Max. Wind Speed (Stowed) 36m/s
Operating Design Wind Speed 26m/s
Max. Design Ambient Temp. 35 deg C
Min Ambient Design Temp 5 deg C
Weight of Crane 23,300kg
Weight of Support Pedestal 3,150kg
Diesel Engine 4 cyl, open lined, 104mm bore, 132mm stroke, 2200 rpm.
Hydraulic Winch Disp/Rev 160/48
Main Line Winch Speed 24m/min for SWL, 80m/min No Load
Rope Diam./Strength 20mm dia, Breaking Strength 409KN S/F 5
Fuel Supply By Platform Hydraulic Hand Pump, supplied.

Packing, Preservation and Storage Procedure

Packing, Preservation and Storage will be in accordance with the manufacturer's procedure no. 4191606.

The crane components prior to leaving the PELLIGRINI factory will be prepared for long term storage for up to 24 months.

Special attention and additional protection will be given to critical components.

Long term storage for the crane once delivered to EGYPT will be in a controlled warehouse environment under cover indoors.

During the storage period the following checks will be made:

- Check that no humidity has condensed inside electrical components, and dry if deemed required.
- Check id disassembled gears, pins or other machined parts are in need of fresh grease.
- Check packages and covers are not damaged, repair if necessary.

PELLIGRINI technicians will be required prior to re assembly after storage to check, reassemble and commission the crane for intended use.

Photographs & Drawings



Boom During Manufacture



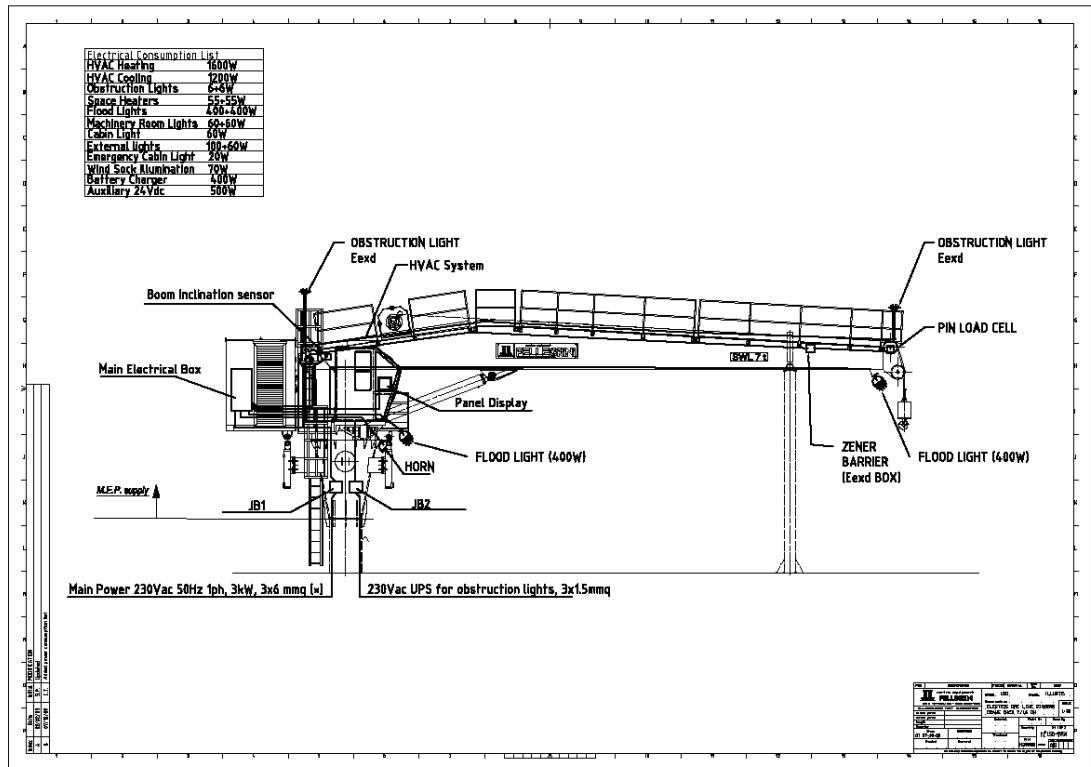
Diesel Engine Prior to Installation

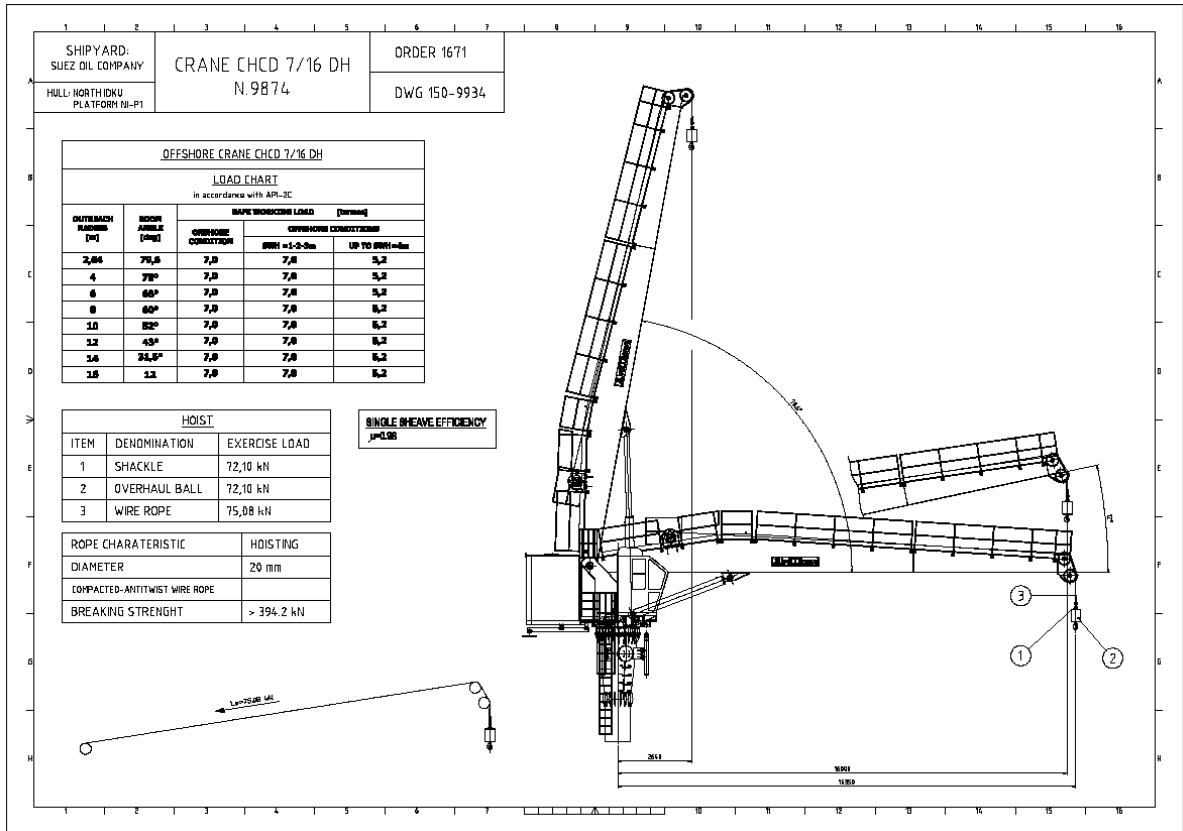


Crane Cabin



Crane Cabin and Turret Assembly





Notes:

- Full package of Original Manufacturers' Data available.
- Stored and Preserved in Italy – future shipment to Egypt for ongoing storage
- All items remain available Subject to Prior sale
- Price upon request from Owners